

NHS Services We Provide*



Pre-op & Post-op
Cataract Care



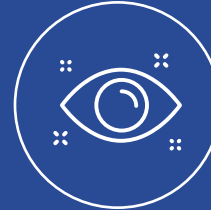
Cataract
Surgery



YAG Laser
Treatment



Glaucoma



Oculoplastics
Surgery



General
Ophthalmology

*Services provided dependent on location

Easy Referral Pathway For All NHS Patients

Optometrist Referral



Optometrists must make contact with the patient's GP, who will then make the referral using the NHS e-Referral Service (e-RS).

GP Referral



All healthcare professionals referring NHS patients to ACES should use the NHS e-Referral Service in the first instance – to the Ophthalmology pathway but only if patients meet the CBA policy criteria.

- **e-RS** – Select ACES from the provider list

If the e-Referral Service is unavailable, please contact **aces.referrals1@nhs.net** for support.

24/7 Practitioner and Post-Operative Advice Line:

0333 188 2938 Monday to Saturday between 9am-5pm

03300 240 488 outside normal operating hours.

NHS Partnership Executives

If you would like to hear more about our services and how we can support you and your practice in providing excellent care to your patients, please contact your local NHS Partnership Executive:

communications@aces-eyeclinic.co.uk



ACES Bristol Clinic

9th Floor, Castlemead, Lower Castle Street, Bristol BS1 3AG
Pre-op & Post-op Cataract Care | Cataract Surgery |
Glaucoma Care | YAG Laser Treatment



Directions: Our clinic is located on Lower Castle Street just off Castle Park and adjacent to A4044 (Temple Wy Upas). The clinic is situated beside the H&M clothing shop and across from Harvey Nichols in The Galleries. The building is tall and has 'Castlemead' signage on the front glass panels.

Parking: NCP Bristol Broadmead is located beside the Castlemead building which has paid parking available 24/7. Other paid parking available in the area is within The Galleries shopping centre.

By Train: The nearest station is Bristol Temple Meads station which is a ten-minute walk away.

By Bus: Bristol Bus station is a ten-minute walk away and there are a variety of local bus services located close to the Castlemead building, which are all a short walk away.

What Our Patients Say About ACES



99.4%

would recommend ACES vision correction surgery to their friends and family.*



98.6%

were satisfied with their care.*



97.8%

were satisfied or very satisfied with their overall experience at ACES.*



91.2%

said their quality of life has improved since having surgery.*

www.aces-eyeclinic.co.uk

0333 188 2937 | aceseyeclinic.enquiries@nhs.net

ACES

Providing NHS patients with choice when it comes to their eye care.

NHS

*2023 ACES Telemedicine Post-Op Questionnaire and External Optometrist Feedback form. Dates between 1st January to 3rd of September 2023. Sample size 3,776.