

NHS Services We Provide*



Pre-op & Post-op
Cataract Care



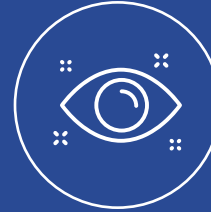
Cataract
Surgery



YAG Laser
Treatment



Glaucoma



Oculoplastics
Surgery



General
Ophthalmology

*Services provided dependent on location

Easy Referral Pathway For All NHS Patients

Optometrist Referral



We advise you to follow your local referral pathway. ACES accepts referrals via the following:

- **Direct** - cpicb.acesreferrals@nhs.net
- **Referral Management** - Note ACES as the patient's choice

GP Referral



All healthcare professionals referring NHS patients to ACES should use the NHS e-Referral Service.

- **e-RS** – Select ACES from the provider list

24/7 Practitioner and Post-Operative Advice Line:

0333 188 2938 Monday to Saturday between 9am-5pm

03300 240 488 outside normal operating hours.

NHS Partnership Executives

If you would like to hear more about our services and how we can support you and your practice in providing excellent care to your patients, please contact your local NHS Partnership Executive:

communications@aces-eyeclinic.co.uk



ACES Fakenham Clinics

Fakenham Holt Road

2 Holt Road, Fakenham, Norfolk NR21 8BQ
Pre-assessments |
General Ophthalmology |
Glaucoma Care | YAG Laser Treatment

Fakenham Medical Practice

Meditrina House, Trinity Road, Fakenham
Norfolk NR21 8SY
Cataract Surgery | Oculoplastics



Directions: ACES is located on Holt Road, which you can reach by following Whitehorse Street up to the double-roundabout after Argos.

Parking: There is a car park on Queens Road, parking charges apply. There is another car park called Millers Walk, where you can get the first two hours for free by registering your licence plate on the machine.

By Train: There is no train station in Fakenham, the closest one is Norwich, from which you must take the bus (X29 Network Norwich) into Fakenham.

By Bus: The bus stop is by the Aldi, which is a five-minute walk from the clinic.

Directions: ACES is located within the Fakenham Medical Practice, opposite the Morrisons.

Parking: There is free parking outside the clinic.

By Train: There is no train station in Fakenham, the closest one is Norwich, from which you must take the bus (X29 Network Norwich) into Fakenham.

By Bus: The bus stop is by the Lidl, which is a ten-minute walk from the clinic.

What Our Patients Say About ACES



99.4%

would recommend ACES vision correction surgery to their friends and family.*



98.6%

were satisfied with their care.*



97.8%

were satisfied or very satisfied with their overall experience at ACES.*



91.2%

said their quality of life has improved since having surgery.*

www.aces-eyeclinic.co.uk

0333 188 2937 | aceseyeclinic.enquiries@nhs.net

ACES

Providing NHS patients with choice when it comes to their eye care.

NHS