

NHS Services We Provide*



Pre-op & Post-op
Cataract Care



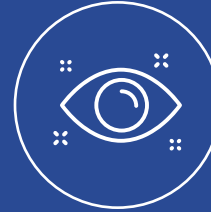
Cataract
Surgery



YAG Laser
Treatment



Glaucoma



Oculoplastics
Surgery



General
Ophthalmology

*Services provided dependent on location

Easy Referral Pathway For All NHS Patients

Optometrist Referral



We advise you to follow your local referral pathway, which can include the below.

- Optometrists can refer directly to ACES onto the Eye V platform.
- Alternatively optometrists can make contact with the patient's GP, who will then make the referral using the NHS e-Referral Service (e-RS).

GP Referral



All healthcare professionals referring NHS patients to ACES should use the NHS e-Referral Service.

- **e-RS** – Select ACES from the provider list

24/7 Practitioner and Post-Operative Advice Line:

0333 188 2938 Monday to Saturday between 9am-5pm

03300 240 488 outside normal operating hours.

NHS Partnership Executives

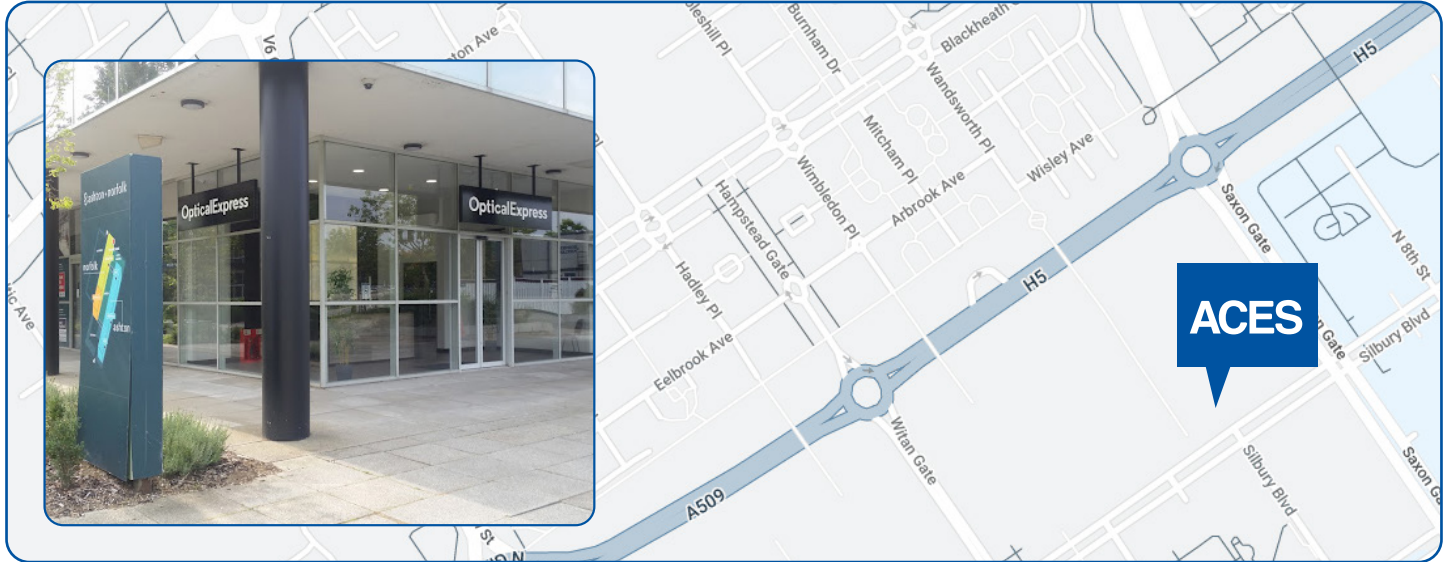
If you would like to hear more about our services and how we can support you and your practice in providing excellent care to your patients, please contact your local NHS Partnership Executive:

communications@aces-eyeclinic.co.uk



ACES Milton Keynes Clinic

2nd Floor, Norfolk House, Saxon Gate West, Milton Keynes MK9 2DN
Pre-op & Post-op Cataract Care | Cataract Surgery | General Ophthalmology |
Glaucoma Care | YAG Laser Treatment



Directions: The Milton Keynes Clinic is situated in Norfolk House on Saxon Gate West, Milton Keynes. It is just a four minute walk from the Marks & Spencer in the Milton Keynes Centre. Please enter the clinic at the ground floor reception entrance.

Parking: There are around 21,000 parking spaces in central Milton Keynes, most are pay and display. There is parking along Silbury Boulevard however most are pay and display. There are different grades of parking spots – “standard” is recommended as opposed to “premium”.

By Train: There are frequent rail services to central Milton Keynes train station, which is only a short walk or taxi ride from the clinic.

By Bus: Central Milton Keynes is served by a network of frequent bus services from all parts of the city. Take a bus to the Milton Keynes Centre and walk under the underpass from Marks & Spencer to the clinic.

What Our Patients Say About ACES



99.4%

would recommend ACES vision correction surgery to their friends and family.*



98.6%

were satisfied with their care.*



97.8%

were satisfied or very satisfied with their overall experience at ACES.*



91.2%

said their quality of life has improved since having surgery.*

www.aces-eyeclinic.co.uk

0333 188 2937 | aceseyeclinic.enquiries@nhs.net

ACES

Providing NHS patients with choice when it comes to their eye care.

NHS

*2023 ACES Telemedicine Post-Op Questionnaire and External Optometrist Feedback form. Dates between 1st January to 3rd of September 2023. Sample size 3,776.