

Providing Exceptional
NHS Eye Care Services Since 2005

ACES

NHS Services We Provide*



Pre-op & Post-op
Cataract Care



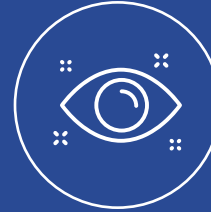
Cataract
Surgery



YAG Laser
Treatment



Glaucoma



Oculoplastics
Surgery



General
Ophthalmology

*Services provided dependent on location

Easy Referral Pathway For All NHS Patients

Optometrist Referral



Optometrists must make contact with the patient's GP, who will then make the referral using the local Referral Management.

GP Referral



All healthcare professionals referring NHS patients to ACES should use the following:

- **Referral Management** – EMS (patients in the city centre) or Health Harmonie (patients in the county)

24/7 Practitioner and Post-Operative Advice Line:

0333 188 2938 Monday to Saturday between 9am-5pm

03300 240 488 outside normal operating hours.

NHS Partnership Executives

If you would like to hear more about our services and how we can support you and your practice in providing excellent care to your patients, please contact your local NHS Partnership Executive:

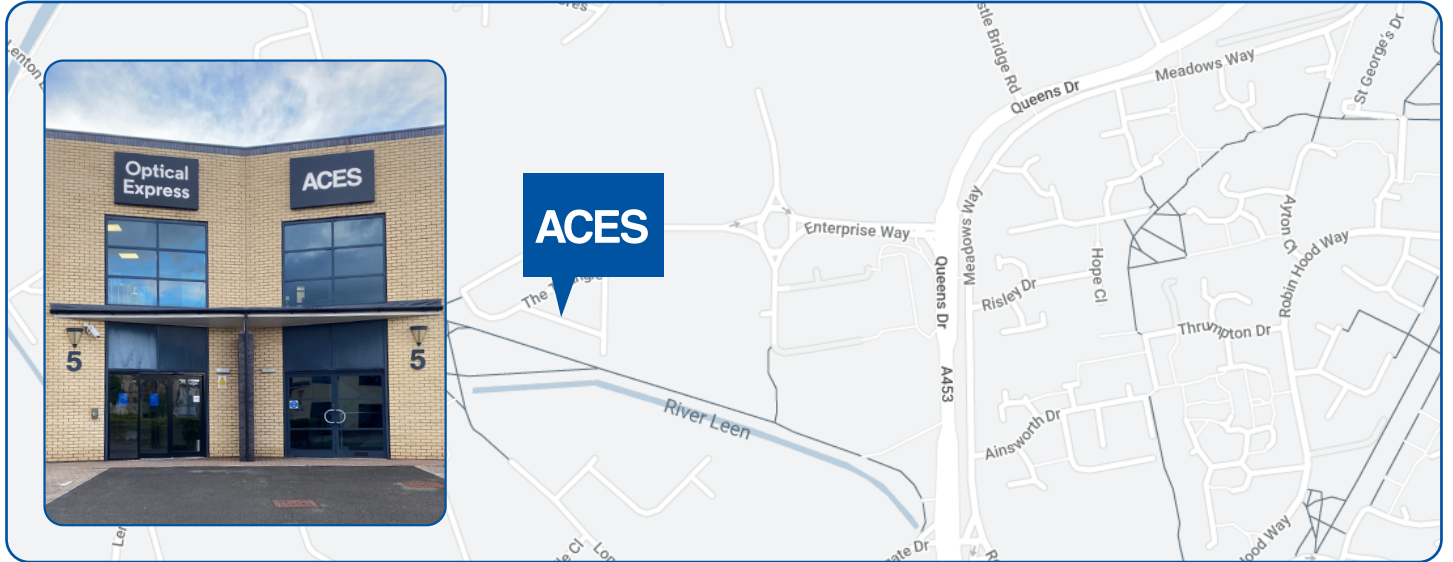
communications@aces-eyeclinic.co.uk



ACES Nottingham Clinic

5/6 The Triangle, NG2 Business Park, Nottingham NG2 1AE

Pre-op & Post-op Cataract Care | Cataract Surgery | General Ophthalmology |
Glaucoma Care | Oculoplastics | YAG Laser Treatment



Directions: ACES is situated on the outskirts of Nottingham city centre which is easily accessible from the M1 and A1. The clinic is located on The Triangle. NG2 Business Park lies approximately 1.5 miles south west of Nottingham city centre, off Queens Drive (A453), the main arterial route between Nottingham and Junction 24 of the M1 motorway. Head towards the city centre from Queens Drive then turn left onto Enterprise Way, over the mini roundabout. You'll see the NG2 tram stop on your left, continue as far as it will allow and turn left. ACES is on the left hand side. Castle Marina Retail Park lies within close proximity of NG2.

Parking: Free on-site parking.

By Train: Tram – Toton/Hucknall Line of the NET tramline passes directly through the business park providing fast links to Nottingham city centre. Train – The clinic is a thirty minute walk from Nottingham train station.

By Bus: The number 49/49B bus lines stop at the NG2 Business Park and it is then a seven-minute walk to the clinic.

What Our Patients Say About ACES



99.4%

would recommend ACES vision correction surgery to their friends and family.*



98.6%

were satisfied with their care.*



97.8%

were satisfied or very satisfied with their overall experience at ACES.*



91.2%

said their quality of life has improved since having surgery.*

www.aces-eyeclinic.co.uk

0333 188 2937 | aceseyeclinic.enquiries@nhs.net

ACES

NHS

Providing NHS patients with choice when it comes to their eye care.

*2023 ACES Telemedicine Post-Op Questionnaire and External Optometrist Feedback form. Dates between 1st January to 3rd of September 2023. Sample size 3,776.