

NHS Services We Provide*



Pre-op & Post-op
Cataract Care



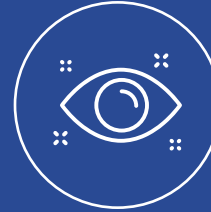
Cataract
Surgery



YAG Laser
Treatment



Glaucoma



Oculoplastics
Surgery



General
Ophthalmology

*Services provided dependent on location

Easy Referral Pathway For All NHS Patients

Optometrist Referral



We advise you to follow your local referral pathway. ACES accepts referrals via the following:

- **Direct** - cpicb.acesreferrals@nhs.net
- **Referral Management** - Note ACES as the patient's choice (where applicable)

GP Referral



All healthcare professionals referring NHS patients to ACES should use the NHS e-Referral Service in the first instance.

- **e-RS** – Select ACES from the provider list

24/7 Practitioner and Post-Operative Advice Line:

0333 188 2938 Monday to Saturday between 9am-5pm

03300 240 488 outside normal operating hours.

NHS Partnership Executives

If you would like to hear more about our services and how we can support you and your practice in providing excellent care to your patients, please contact your local NHS Partnership Executive:

communications@aces-eyeclinic.co.uk



ACES Wisbech Clinic

Cromwell Road, Wisbech, Cambridgeshire PE14 0SN

Pre-op & Post-op Cataract Care | Cataract Surgery | General Ophthalmology |
Glaucoma Care | Oculoplastics | YAG Laser Treatment



Directions: ACES is located on Cromwell Road (B198), south of the Thurlow Nunn car dealership and the Tesco Extra.

Parking: If coming from the North, at the main roundabout outside the Horsefair Shopping Centre, take the exit towards the B198 and keep straight until you have reached our clinic. If coming from the south, take left on the B198 from the A47. There is free parking right outside the clinic.

By Train: There is no train station in Wisbech, the closest one is Peterborough, from which you must take the bus (B Excel / C Excel) into Wisbech.

By Bus: The bus stop is by the Tesco Extra, which is a five-minute walk from the clinic on the same road.

What Our Patients Say About ACES



99.4%

would recommend ACES vision correction surgery to their friends and family.*



98.6%

were satisfied with their care.*



97.8%

were satisfied or very satisfied with their overall experience at ACES.*



91.2%

said their quality of life has improved since having surgery.*

www.aces-eyeclinic.co.uk

0333 188 2937 | aceseyeclinic.enquiries@nhs.net

ACES

Providing NHS patients with choice when it comes to their eye care.

NHS

*2023 ACES Telemedicine Post-Op Questionnaire and External Optometrist Feedback form. Dates between 1st January to 3rd of September 2023. Sample size 3,776.